

# THE SAN FRANCISCO YACHT CLUB



98 BEACH ROAD, PO BOX 379, BELVEDERE, CALIFORNIA 94920 - RACE OFFICE 415-789-5647

## Anne McCormack Invitational Cup April 4, 2026

### SAILING INSTRUCTIONS

(NOR attached at end of SIs)

#### **1 CHANGES TO SAILING INSTRUCTIONS**

- 1.1 Any change to the sailing instructions will be posted before 0900 on the day it will take effect, except that any change to the schedule of races will be posted by 1200 on the day before it will take effect.
- 1.2 Oral changes to the sailing instructions may be made on the water. The race committee will display code flag "L," hail boats, and announce on VHF USA channel 65A (1065) of a change.

#### **2 COMMUNICATIONS WITH COMPETITORS**

- 2.1 Notices to competitors, other than those related to hearings, will be posted on the official notice board located outside on the west wall of the SFYC Clubhouse.
- 2.2 Notices related to hearings will be posted at:  
<https://www.racingrulesofsailing.org/schedules/14367/event>
- 2.3 The NOR, SIs, and amendments thereto will also be posted online at [www.sfyc.org](http://www.sfyc.org)
- 2.4 The race committee may use VHF USA channel 65A (1065) to communicate information about the races.
- 2.5 Except in an emergency, or when retiring from a race, a boat that is racing shall not make voice or data transmissions and shall not receive voice or data communication that is not available to all boats.

#### **3 SIGNALS MADE ASHORE**

- 3.1 Signals made ashore will be displayed at the main flagpole on the SFYC lawn.
- 3.2 When flag AP is displayed ashore, '1 minute' is replaced with 'not less than 30 minutes' in Race Signals AP.

#### **4 CLASS FLAGS**

Class flags will be the following numerical pennants:

<u>Fleet</u>	<u>Flag</u>
Spinnaker	one
Non-Spinnaker	two

#### **5 RACING AREA**

The intended racing area will be in the vicinity of the west side of Angel Island and the Central Bay.

## **6 COURSES AND MARKS**

The courses and marks are described in Attachment A. The course to be sailed will be displayed by numeral placards on the race committee signal boat.

## **7 OBSTRUCTIONS**

Boats shall not pass between the bell buoy off the west end of Alcatraz Island, or the Point Blunt buoy, or the south tower of the Golden Gate Bridge, and the closest point ashore of each. These are obstructions.

## **8 THE START**

- 8.1 The starting line will be offshore of Pt. Knox.
- 8.2 The starting line will be between a staff or halyard displaying an orange flag on the race committee signal boat and the course side of a yellow inflatable mark.
- 8.3 [DP] Boats whose warning signal has not been made shall avoid the starting area during the starting sequence for other races.
- 8.4 If any part of a boat's hull is on the course side of the starting line at her starting signal and she is identified, the race committee will attempt to hail her sail number. Failure to hail her number, failure of her to hear such a hail, or the order in which boats are hailed will not be grounds for a redress for request. This changes RRS62.1(a).
- 8.5 A boat that does not start within 4 minutes after her starting signal will be scored Did Not Start without a hearing. This changes RRS A5.1 and A5.2.
- 8.6 The warning signal for succeeding fleets will be made with or after the starting signal for the preceding fleet. Fleets may be started in any order, but it is expected that fleets will be started in the order listed in section CLASS FLAGS above.

## **9 CHANGE OF THE NEXT LEG OF THE COURSE**

To change the next leg of the course, the race committee will move the original mark (or finishing line) to a new position.

## **10 THE FINISH**

- 10.1 The finishing line is between a staff or halyard displaying a blue flag on a race committee boat and the same yellow inflatable mark as the starting line.
- 10.2 A boat that retires from a race shall notify the race committee as soon as possible. Notification by radio on VHF USA channel 65A(1065) is preferred.

## **11 TIME LIMITS**

- 11.1 Boats not finishing within 45 minutes after the first boat in her fleet sails the course and finishes will be scored Did Not Finish without a hearing. This changes rules 35, A4, and A5.
- 11.2 No race will be started after 1500 hours.

## **12 HEARING REQUESTS**

- 12.1 The protest time limit is one hour after the RC boat docks. This time will be posted.
- 12.2 Hearing requests shall be created and submitted online at [https://www.racingrulesofsailing.org/protests/new?event\\_id=14367](https://www.racingrulesofsailing.org/protests/new?event_id=14367) This changes rule 61.3.
- 12.3 Notices will be posted on <https://www.racingrulesofsailing.org/schedules/14367/event> 30 minutes after the time limit above, to inform competitors of a hearing in which they are parties.
- 12.4 Hearings will be scheduled as soon as possible at the direction of the Chief Judge, and will be held on Zoom.
- 12.5 RRS 62.2(a), 66.2(a), and the US prescription to RRS 63.2 do not apply.

**13 SAFETY REGULATIONS**

Boats shall not impede the passage of commercial vessels and shall comply with USCG Right-of-Way Navigation Rules. Boats must take evasive action well in advance of a potentially dangerous situation.

**14 RISK STATEMENT**

RRS 3 states: 'The responsibility for a boat's decision to participate in a race or to continue to race is hers alone.' By participating in this event each competitor agrees and acknowledges that sailing is a potentially dangerous activity with inherent risks. These risks include strong winds and rough seas, sudden changes in weather, failure of equipment, boat handling errors, poor seamanship by other boats, loss of balance on an unstable platform and fatigue resulting in increased risk of injury. Inherent in the sport of sailing is the risk of permanent, catastrophic injury or death by drowning, trauma, hypothermia or other causes.

## Attachment A

<u>Course #</u>	<u>Description</u>	<u>Approx. Distance</u>
1	Start W-P, L-P Finish	TBD (2 to 3 nm)
2	Start W-P, L-P, W-P, L-P Finish	TBD (5 to 6 nm)
3	Start 16-P, L-P Finish	TBD (6 nm)
4	Start W-P, 8-P, W-P, L-P Finish	TBD (9 to 10 nm)
5	Start 12-P, 17-P, L-P, 12-P, L-P Finish	TBD (4 to 5 nm)
6	Start 17-P, 18-P, L-P, 17-S, L-P Finish	TBD (8 to 9 nm)
7	Start 6-P, 12-P, 6-P Finish	TBD (10 nm)
8	Start 16-P, 12-P, 16-P, L-P Finish	TBD (10 nm)
9	Start W-P, 18-P, 24-P, W-P, L-P Finish	TBD (12 to 13 nm)
10	Start W-P, 19-P Finish	TBD (8 nm)

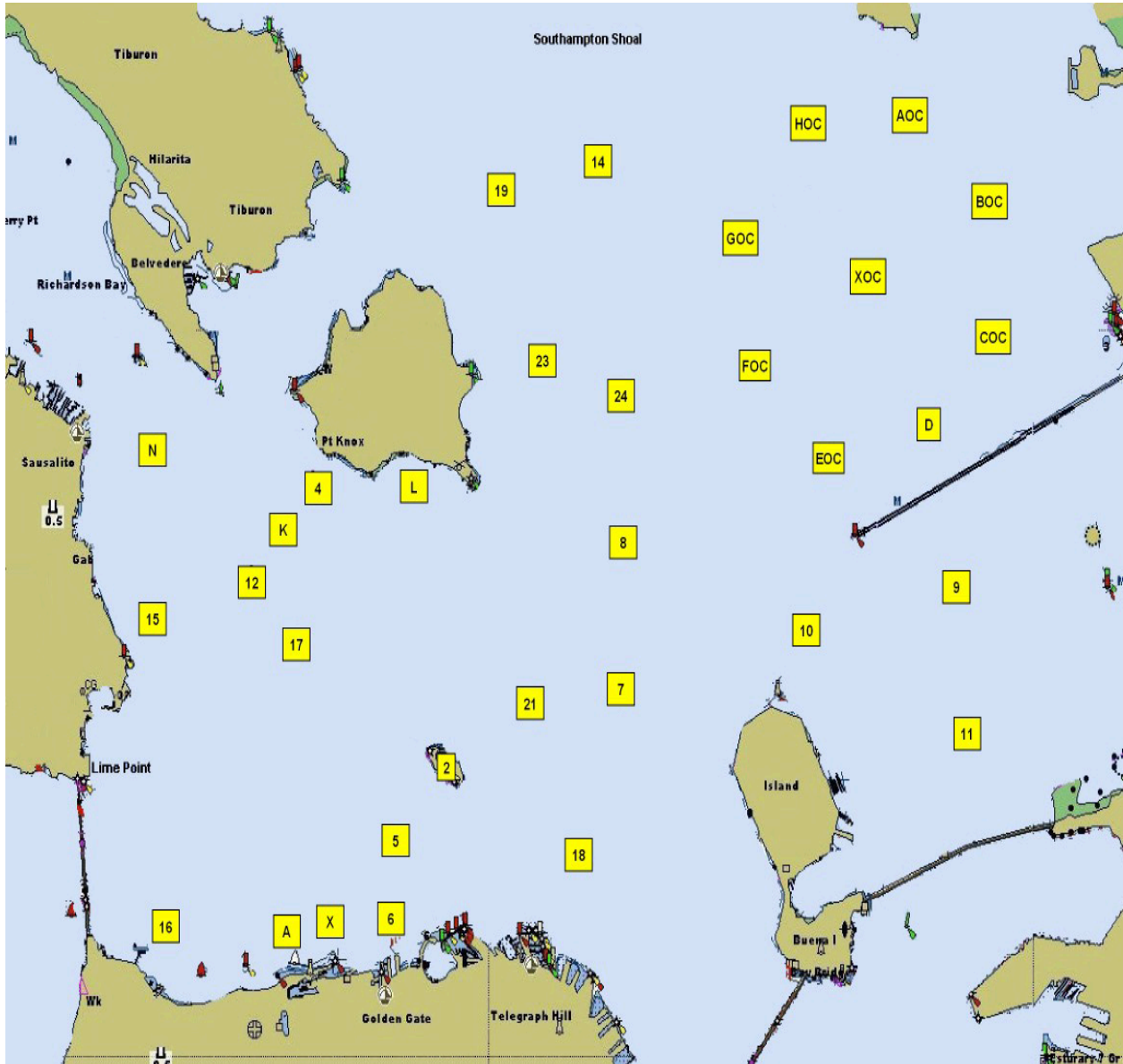
[‘P’ designates mark to be left to port. ‘S’ designates mark to be left to starboard.]

Marks: All marks are rounding marks except the starting and finishing marks.

- “Start” Yellow SFYC Inflatable set as the starting and finish line mark
- “W” Red SFYC inflatable set 0.75-1 nm to windward of “S/F”
- “L” Red SFYC inflatable set to leeward of “S/F”
- “6” YRA Mark 6, Yellow Column ”M” 200 yards north of Fort Mason Docks  
or yellow SFYC inflatable replacement
- “8” YRA Mark 8, R”4” Fl 4s Horn, 1.0 nm east of Point Blunt
- “12” YRA Mark 12, “**Little Harding Rock**” (G “1” Fl G)
- “16” YRA Mark 16, “**Blackaller**” (Yellow Column “C” 0.2 nm E of Fort Point)
- “17” YRA Mark 17, “**Harding Rock**” (RG “HR” Fl (2 + 1) R 6s)
- “18” YRA Mark 18, “**Blossom Rock**” (RG “BR” Fl (2+1) G 6s Bell)
- “19” YRA Mark 19, R”8” Fl R2.5s (approx. 1.5 nm E of Point Bluff)
- “24” YRA Mark 24, R”6” Fl R 4s Bell, 1.1 nm E of Quarry Point

See YRA Mark Chart attached for the approximate location of YRA marks.

# YRA Mark Diagram



# NOTICE OF RACE

**Organizing Authority: The San Francisco Yacht Club, Belvedere, California**

## **1 RULES**

- 1.1 This regatta will be governed by the rules as defined in *The Racing Rules of Sailing* (RRS).
- 1.2 Rule 40.1 will apply at all times when boats are in the racing area, and on their way to and from the racing area.

## **2 SAILING INSTRUCTIONS**

The sailing instructions will be available by 1800 hours on April 1 on the website [www.sfyc.org](http://www.sfyc.org) > On the Water > Regattas.

## **3 COMMUNICATIONS WITH COMPETITORS**

- 3.1 The official notice board is located on the west wall of the SFYC clubhouse. The NOR and sailing instructions, and amendments thereto, will also be posted online at [www.sfyc.org](http://www.sfyc.org) > On the Water > Regattas. Hearing notices will be posted on a separate online platform, with links from the above website and in the sailing instructions.
- 3.2 On the water the race committee will make courtesy broadcasts to competitors on VHF radio channel USA 65A.
- 3.3 From the first warning signal until the end of the last race of the day, except in an emergency, or when retiring from a race, a boat that is racing shall not make voice or data transmissions and shall not receive voice or data communication that is not available to all boats.

## **4 ELIGIBILITY AND ENTRY**

- 4.1 The regatta is open to all monohulls over 18 feet in length, skippered and crewed entirely by women.
- 4.2 Eligible boats may enter by completing the online registration found at [www.sfyc.org](http://www.sfyc.org) > On the Water > Regattas in Spinnaker or Non-Spinnaker Divisions. The Spinnaker Division also includes boats designed and rated without spinnakers, such as the Knarr and Bird classes, and all other classes listed as “No NonSpin” in the NCPHRF Base Rating Report available on the YRA website.
- 4.3 Current Northern California PHRF certificates **are required prior to racing**, except for boats in classes with established NCPHRF one-design ratings, which will be assigned that base rating. NCPHRF certificates may be obtained through the YRA at <https://yra.org/onlinephrfapp/>.
- 4.4 NCPHRF’s Part 1 RULES AND GUIDELINES FOR HANDICAPPING suggestion on rating modifications for non-spinnaker fleets **will not be in effect** and all boats racing in non-spinnaker fleets shall be scored with their assigned NCPHRF certificate rating, or the one-design class base rating, if applicable. Boats that do not have a current certificate or meet the one-design rating criteria will not be scored.
- 4.5 If more than 5 one-design boats are entered by 1700 hours on April 3, the OA may create a separate fleet for that class.
- 4.6 No entries will be accepted after 1700 hours on April 3.

## **5 FEES**

The entry fee is \$60, if received by 1700 hours on April 1. After that time a \$25 late fee will be charged.

## **6 SCHEDULE**

- 6.1 There will be a Skippers’ Meeting at 1000 hours at the SFYC Cove House.
- 6.2 Two races are scheduled.
- 6.3 The first warning signal is scheduled at 1200 hours.

**7 VENUE**

The racing area will be in the vicinity of Knox, west of Angel Island, and the central Bay.

**8 COURSES**

The courses and marks will be described in the sailing instructions, and may include SFYC inflatable marks and YRA permanent marks.

**9 SCORING**

9.1 Scoring will be NCPHRF Time-on-Time calculated with the formula  $TCF=A/(B+rating)$ , where TCF is the time correction factor that the rating is multiplied by, and  $A=B+(fleet's\ middle\ rating)$ . The B Factor used will be as follows for the average of the wind speeds observed on the signal boat at the start and on the finish boat when the first boat in each division finishes:

20+ knots = 500

10-19 knots = 550

Under 10 knots = 575

9.2 All races will count towards the regatta score, no scores will be excluded.

**10 BERTHING**

SFYC guest docks will be available from April 4-5.

**11 RISK STATEMENT**

Competitors participate in the event entirely at their own risk and subject to the terms and conditions of the SFYC liability waiver.

RRS 3 states: 'The responsibility for a boat's decision to participate in a race or to continue to race is hers alone.' By participating in this event each competitor agrees and acknowledges that sailing is a potentially dangerous activity with inherent risks. These risks include strong winds and rough seas, sudden changes in weather, failure of equipment, boat handling errors, poor seamanship by other boats, loss of balance on an unstable platform and fatigue resulting in increased risk of injury. Inherent in the sport of sailing is the risk of permanent, catastrophic injury or death by drowning, trauma, hypothermia or other causes.

**12 INSURANCE**

Each participating boat shall be insured with valid third-party liability insurance with a minimum cover of \$100,000 per incident or the equivalent.

**13 PRIZES**

13.1 The Anne McCormack Perpetual Trophy will be jointly awarded to the winners of each Division.

13.2 Take home trophies will be awarded to the top two boats in each Division.

13.3 The trophy presentation will be at the SFYC Cove House after racing.

**14 FURTHER INFORMATION**

PRO: Forrest Gay

Regatta Chair: Beth Newman, [munnbeth@gmail.com](mailto:munnbeth@gmail.com)

SFYC Race Office: Helen Galli, (415) 789-5647 or [race@sfyc.org](mailto:race@sfyc.org)

-----End of NOR-----

**SOCIAL EVENTS AND SPECIAL CLUB RULES**

- After the racing beer, wine and light snacks will be served for competitors at the SFYC Cove House.

- All competitors must abide by all of the regular and special Club rules in effect, while on Club property (ie: docks, parking lot, clubhouse/deck, etc).
- Guest Crew: guest privileges are available to non-members participating in a Club hosted Regatta, and to allow competitors as guests, without a member, who have been posted and received guest cards.