

THE SAN FRANCISCO YACHT CLUB



98 BEACH ROAD, PO BOX 379, BELVEDERE, CALIFORNIA 94920 - RACE OFFICE 415-789-5647

The Auxiliary Cup October 25, 2022

SAILING INSTRUCTIONS

(NOR attached at end of SIs)

Organizing Authority: The San Francisco Yacht Club, Belvedere, California

1 CHANGES TO SAILING INSTRUCTIONS

- 1.1 Any change to the sailing instructions will be posted before 0900 on the day it will take effect, except that any change to the schedule of races will be posted by 1200 on the day before it will take effect.
- 1.2 Oral changes to the sailing instructions may be made on the water. The race committee will display code flag "L," hail boats, and announce on VHF USA channel 65A of a change.

2 COMMUNICATIONS WITH COMPETITORS

- 2.1 Notices to competitors, other than those related to hearings, will be posted on the official notice board located outside on the west wall of the SFYC Clubhouse.
- 2.2 Notices related to hearings will be posted at:
https://www.racingrulesofsailing.org/event_menus/4867/event_menu
- 2.3 The NOR, SIs, and amendments thereto will also be posted online at www.sfyc.org
- 2.4 The race committee may use VHF USA channel 65A to communicate information about the races.
- 2.5 Except in an emergency, or when retiring from a race, a boat that is racing shall https://www.racingrulesofsailing.org/event_menus/4867/event_menu not make voice or data transmissions and shall not receive voice or data communication that is not available to all boats.

3 SIGNALS MADE ASHORE

- 3.1 Signals made ashore will be displayed at the main flagpole on the SFYC lawn.
- 3.2 When flag AP is displayed ashore, '1 minute' is replaced with 'not less than 30 minutes' in Race Signals AP.

4 CLASS FLAGS

Class flags will be the following numerical pennants:

<u>Fleet</u>	<u>Flag</u>
Spinnaker	one
Non-Spinnaker	two

5 COURSES AND MARKS

The courses and marks are described in Attachment A. The course to be sailed will be displayed by numeral placards on the race committee signal boat.

6 OBSTRUCTIONS

Boats shall not pass between the bell buoy off the west end of Alcatraz Island, or the Point Blunt buoy, and the closest point ashore of each. These are obstructions.

7 THE START

- 7.1 The starting line will be offshore of Pt. Knox.
- 7.2 The starting line will be between a staff or halyard displaying an orange flag on the race committee signal boat and the course side of a yellow inflatable mark.
- 7.3 [DP] Boats whose warning signal has not been made shall avoid the starting area during the starting sequence for other races.
- 7.4 If any part of a boat's hull is on the course side of the starting line at her starting signal and she is identified, the race committee will attempt to hail her sail number. Failure to hail her number, failure of her to hear such a hail, or the order in which boats are hailed will not be grounds for a redress for request. This changes RRS62.1(a).
- 7.5 A boat that does not start within 4 minutes after her starting signal will be scored Did Not Start without a hearing. This changes RRS A5.1 and A5.2.
- 7.6 The warning signal for succeeding fleets will be made with or after the starting signal for the preceding fleet. Fleets may be started in any order, but it is expected that fleets will be started in the order listed in section CLASS FLAGS above.

8 CHANGE OF THE NEXT LEG OF THE COURSE

To change the next leg of the course, the race committee will move the original mark (or finishing line) to a new position.

9 THE FINISH

- 9.1 The finishing line is between a staff or halyard displaying a blue flag on a race committee boat and the same yellow inflatable mark as the starting line.
- 9.2 [DP] A boat that retires from a race shall notify the race committee as soon as possible. Notification by radio on VHF USA channel 65A is preferred.

10 TIME LIMITS

- 10.1 Boats not finishing within 45 minutes after the first boat in her fleet sails the course and finishes will be scored Did Not Finish without a hearing. This changes rules 35, A4, and A5.
- 10.2 No race will be started after 1500 hours.

11 HEARING REQUESTS

- 11.1 The protest time limit is one hour after the race committee boat docks, as determined by the PRO.
- 11.2 Hearing requests such as protest, requests for redress, requests to reopen a hearing, and post-race penalties shall be filed online at https://www.racingrulesofsailing.org/prottests/new?event_id=4867. This changes rule 61.3, 62.2, and 66.2.
- 11.3 Notices will be posted on https://www.racingrulesofsailing.org/event_menus/4867/event_menu within 30 minutes of receipt, to inform competitors of a hearing in which they are parties.
- 11.4 Hearings will be scheduled as soon as possible at the direction of the Chief Judge, and will be held on Zoom.
- 11.5 RRS 62.2(a), 66.2(a), and the US prescription to RRS 63.2 do not apply.

12 SAFETY REGULATIONS

[DP][NP] Boats shall not impede the passage of commercial vessels and shall comply with USCG Right-of-Way Navigation Rules. Boats must take evasive action well in advance of a potentially dangerous situation.

13 RISK STATEMENT

RRS 3 states: 'The responsibility for a boat's decision to participate in a race or to continue to race is hers alone.' By participating in this event each competitor agrees and acknowledges that sailing is a potentially dangerous activity with inherent risks. These risks include strong winds and rough seas, sudden changes in weather, failure of equipment, boat handling errors, poor seamanship by other boats, loss of balance on an unstable platform and fatigue resulting in increased risk of injury. Inherent in the sport of sailing is the risk of permanent, catastrophic injury or death by drowning, trauma, hypothermia or other causes.

Attachment A

Course #	Description	Approx. Distance
1	Start W-P, L-P Finish	TBD (2 to 3 nm)
2	Start W-P, L-P, W-P, L-P Finish	TBD (5 to 6 nm)
3	Start W-P, 8-P, W-P, L-P Finish	TBD (9 to 10 nm)
4	Start 12-P, 17-P, L-P, 12-P, L-P Finish	TBD (4 to 5 nm)
5	Start 17-P, 18-P, L-P, 17-S, L-P Finish	TBD (8 to 9 nm)
6	Start 6-P, 12-P, 6-P Finish	TBD (10 nm)
7	Start 16-P, L-P Finish	TBD (6 miles)
8	Start 16-P, 12-P, 16-P, L-P Finish	TBD (10 nm)
9	Start W-P, 18-P, 24-P, W-P, L-P Finish	TBD (12 to 13 nm)
10	Start W-P, 21-P, 8-P, W-P, L-P Finish	TBD (9 to 10 nm)
11	Start W-P, 19-P Finish	TBD (8 nm)

[‘P’ designates mark to be left to port. ‘S’ designates mark to be left to starboard.]

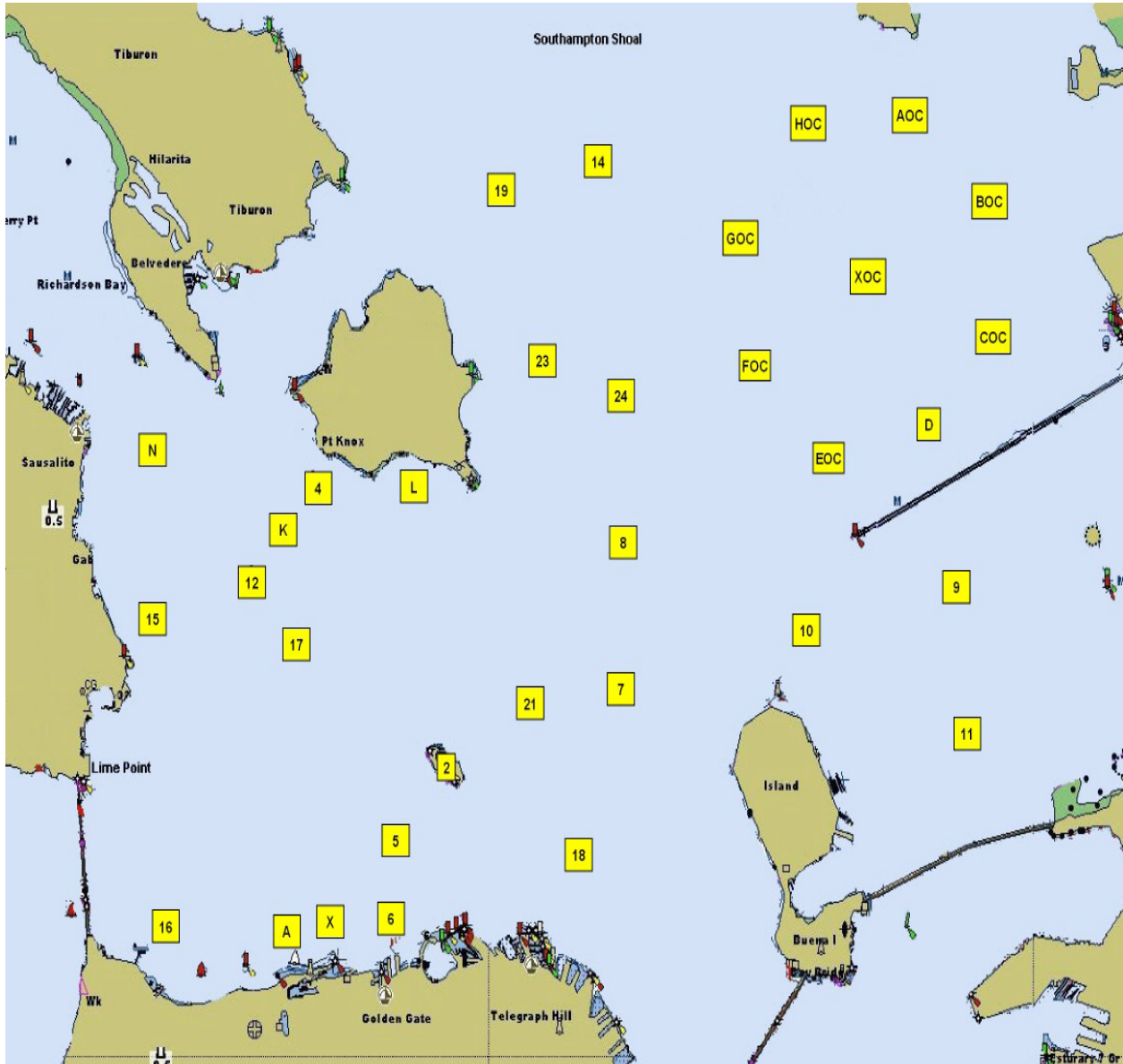
Marks: All marks are rounding marks except starting and finishing marks.

“Start” and “Finish” - Yellow SFYC Inflatable set as the starting line mark

- “W” Red SFYC inflatable set 0.75-1 nm to windward of “S/F”
- “L” Red SFYC inflatable set to leeward of “S/F”
- “6” YRA Mark 6, Yellow Column ”M” 200 yards north of Fort Mason Docks
or yellow SFYC inflatable replacement
- “8” YRA Mark 8, R”4” Fl 4s Horn, 1.0 nm east of Point Blunt
- “12” YRA Mark 12, “**Little Harding Rock**” (G “1” Fl G)
- “16” YRA Mark 16, “**Blackaller**” (Yellow Column “C” 0.2 nm E of Fort Point)
- “17” YRA Mark 17, “**Harding Rock**” (RG “HR” Fl (2 + 1) R 6s)
- “18” YRA Mark 18, “**Blossom Rock**” (RG “BR” Fl (2+1) G 6s Bell)
- “19” YRA Mark 19, R”8” Fl R2.5s (approx. 1.5 nm E of Point Bluff)
- “21” YRA Mark 21, G”1” Fl G 6s, approx. 0.65 nm NE of Alcatraz
- “24” YRA Mark 24, R”6” Fl R 4s Bell, 1.1 nm E of Quarry Point

See YRA Mark Chart attached for the approximate location of YRA marks.

YRA Mark Diagram



NOTICE OF RACE

Organizing Authority: The San Francisco Yacht Club, Belvedere, California

The notation '[DP]' denotes a rule in the notice of race (NoR) [or sailing instructions (SIs)] for which the penalty for a breach of that rule may, at the discretion of the protest committee, be less than disqualification. "[NP]" denotes a rule that shall not be grounds for protests by a boat and for which the protest committee may refuse to hold a hearing. "[SP]" denotes a rule for which a standard penalty may be applied by the race committee or technical committee without a hearing (this changes RRS A5); and This changes RRS 60.1(a).

1 RULES

- 1.1 This event is governed by the rules as defined in *The Racing Rules of Sailing* (RRS).
- 1.2 Rule 40.1 will apply at all times when boats are in the racing area, and on their way to and from the racing area.

2 SAILING INSTRUCTIONS

The sailing instructions will be available by 1700 hours on September 22, at The San Francisco Yacht Club and on the website, www.sfyc.org.

3 COMMUNICATION

- 3.1 The official notice board is located on the west wall of the SFYC clubhouse. Notices will also be posted online at www.sfyc.org.
- 3.2 On the water the race committee will make courtesy broadcasts to competitors on VHF radio channel USA 65A.
- 3.3 From the first warning signal until the end of the last race of the day, except in an emergency, or when retiring from a race, a boat that is racing shall not make voice or data transmissions and shall not receive voice or data communication that is not available to all boats.

4 ELIGIBILITY AND ENTRY

- 4.1 The regatta is open to women Members of The San Francisco Yacht Club, defined as SFYC women Members and females in a Member's family as defined in The San Francisco Yacht Club House Rules and Regulations (3b).
- 4.2 Current Northern California PHRF certificates shall be held by all boats entered, except for boats in classes with established NCPHRF one-design ratings, which will be assigned that base rating.
- 4.3 All boats shall be owned or chartered by an SFYC woman Member, and she shall be the skipper. All other crew members shall be SFYC women Members, or as approved by the Auxiliary Cup Committee:
 - (a) women with a completed and submitted application for SFYC membership.
 - (b) female family members, under the age of 30, of an SFYC Member.

All crew members shall be registered online on the registration website by 1600 hours on September 22.

- 4.4 Eligible boats shall enter in either the Spinnaker or Non-Spinnaker Division by completing registration online at www.sfyc.org > On the Water > Regattas. Only online entries will be accepted. There is no entry fee. If fewer than 5 boats register in either division by 1600 hours on September 22, the race committee may require that all boats sail in the Non-Spinnaker Division. No Division changes will be allowed after 1600 hours on September 22.
The Spinnaker Division includes boats designed and rated with spinnakers and which will be raced with spinnakers. The Spinnaker Division also includes boats designed and rated without spinnakers, such as the Knarr and Bird classes, and all other classes listed as "No NonSpin" in the NCPHRF Base Rating Report available on the YRA website.

The Non-Spinnaker Division includes boats who choose to race without spinnakers, and are not listed as “No NonSpin” above.

4.5 No entries will be accepted after 1600 hours on September 23.

5 SCHEDULE

5.1 One race is scheduled.

5.2 The warning signal is scheduled at 1200 hours.

6 VENUE

The racing area will be in the vicinity of Knox, west of Angel Island, and the central Bay.

7 COURSES AND MARKS

The courses and marks will be described in the sailing instructions, and may include SFYC inflatable marks and YRA permanent marks.

8 SCORING

Scoring will be NCPHRF Time-on-Time calculated with the formula $TCF=A/(B+rating)$, where TCF is the time correction factor that the rating is multiplied by, and $A=B+(Fleet's\ middle\ rating)$. The B Factor used will be as follows for the average of the wind speeds observed on the signal boat at the start and on the finish boat when the first boat in each division finishes:

20+ knots = 500

10-19 knots = 550

Under 10 knots = 575

9 RISK STATEMENT

Competitors participate in the event entirely at their own risk and subject to the terms and conditions of the SFYC liability waiver.

RRS 3 states: ‘The responsibility for a boat’s decision to participate in a race or to continue to race is hers alone.’ By participating in this event each competitor agrees and acknowledges that sailing is a potentially dangerous activity with inherent risks. These risks include strong winds and rough seas, sudden changes in weather, failure of equipment, boat handling errors, poor seamanship by other boats, loss of balance on an unstable platform and fatigue resulting in increased risk of injury. **Inherent in the sport of sailing is the risk of permanent, catastrophic injury or death by drowning, trauma, hypothermia or other causes.**

10 PRIZES

Trophies will be awarded to the top two boats in each division. A perpetual trophy will be awarded to the winning boats and will be kept at SFYC.

11 FURTHER INFORMATION

PRO – Bill Melbostad

SFYC Race Office, 415-789-5647 or race@sfyc.org