

THE SAN FRANCISCO YACHT CLUB



98 BEACH ROAD, PO BOX 379, BELVEDERE, CALIFORNIA 94920 RACE OFFICE 415-789-5647

The Great San Francisco Schooner Race Saturday, Aug 28, 2010

SAILING INSTRUCTIONS

Organizing Authority: The San Francisco Yacht Club, Belvedere, California

1. RULES

1.1 The regatta will be governed by the 'rules' as defined in The Racing Rules of Sailing (RRS).

1.2 Attention is directed to the fact that racing rules do not govern the navigation of non-participating vessels, which may be met during the course of the race. Contestants should exercise due caution that there be no violation of the applicable international or inland rules of the road.

1.3 BOATS MUST NOT INTERFERE WITH COMMERCIAL OR NAVAL VESSELS OR TUGS AND THEIR TOWS. BOATS DOING SO AND THEREBY ENDANGERING THEIR OWN SAFETY OR THAT OF THE COMMERCIAL VESSEL WILL BE SUBJECT TO PROTEST BY THE RACE COMMITTEE OR CONTESTANTS.

2. PERSONAL BUOYANCY

RRS 40 is deleted and replaced with "All competitors shall wear life jackets or adequate personal buoyancy while on deck." Note that Flag Y will not be displayed.

3. NOTICES TO COMPETITORS

Notices to competitors will be posted on the official notice board on The San Francisco Yacht Club deck.

4. CHANGES IN SAILING INSTRUCTIONS

Any changes in the sailing instructions will be posted by noon on Aug 27.

5. SCHEDULE

Saturday, Aug 28, 2010 - Warning signal at 1150, preparatory signal at 1155, first start at 1200 hours. Refer to the schedule of starting times shown on Attachment 2.

6. THE COURSES AND MARKS

6.1 Start - Between a staff displaying an orange flag on the yellow SFYC committee boat “Victory”, anchored between Knox and Point Stuart, and an orange inflatable buoy. Cross the line from east to west.

6.2 Course –There will be a Marconi course and Gaff course (noted below)

Marconi course: Start- 16(P)-A(P)-12(S)-6(P)- 17(S)-18(P)- 12(S)- finish

Gaff course: Start-A(P)-12(S)-6(P)- 17(S)-18(P)- 4(S)- finish

a. Mark Descriptions- All marks are rounding marks

16 “Blackaller”	Yellow Sphere “C” 0.2 nm East of Ft Point -
A Outer Buoy “A”	Yellow Column, St Francis Yacht Club
12 Little Harding	G”1” Fl G 4 sec (1 nm SW Pt Knox)
6 Fort Mason	Yellow Sphere “M” 200 yd North of Ft Mason Docks
17 Harding Rock	RG “HR” Fl (2+1) R6s
18 Blossom Rock	RG”BR” Fl G 6 sec bell (1 nm SE Alcatraz)
4 Pt Knox	R “2” Fl 4s

b. Please see Attachment 1 for approximate mark locations.

6.3 Finish - Between a staff displaying an orange flag on the SFYC committee boat “Victory”, anchored in the vicinity of Elephant Rock near the Corinthian Yacht Club in Raccoon Strait, and an orange inflatable buoy. Cross the line from west to east.

7. THE START

7.1 This changes RRS 26. The race shall be started as follows: A five (5) minute starting sequence will be used. After initial warning and preparatory signals, each succeeding group’s preparatory period will be initiated by the start for the preceding group and indicated by the hoisting of a red flag. Each visual signal will be lowered one (1) minute before the next visual signal is made. Times shall be taken from the visual signal; the failure of the sound signal shall be disregarded.

Warning Signal	Yellow flag	1 sound	-10 minutes
Preparatory Signal	Blue flag	1 sound	-5 minutes
1st Starting Signal	Red flag	1 sound	0 minutes
Next Group Start	Red flag	1 sound	5 minutes intervals

7.2 Boats shall start in accordance with individual handicaps beginning at 1200 hours, Saturday Aug 28, 2010. The committee boat will provide your starting time on request; however, it is each boat’s responsibility to start at the proper time.

7.3 Boats whose preparatory signal has not been made shall keep clear of the starting area and of all boats whose preparatory signal has been made. Yachts shall not cross the starting line except when preparing to start or starting.

- 7.4 Yachts starting prematurely by less than one (1) minute will be penalized two (2) minutes in calculating their final elapsed time and time to finish. Due to maneuverability concerns, yachts are discouraged from trying to return to the proper side of the starting line again within one (1) minute of their start. This changes RRS 29.1.
- 7.5 Yachts starting prematurely by more than one (1) minute will be disqualified unless they return and pass through the starting line again after their designated starting time. The race committee will attempt to notify a yacht starting prematurely by more than one (1) minute via radio communication on Channel 65.

8. RACING

- 8.1 While racing, a yacht shall not touch a starting mark before starting, a mark that begins, rounds, or ends a leg of the course on which she is sailing, or a finishing mark after finishing. (RRS 31.1)
- 8.2 A yacht that has broken RRS 31.1 may, after getting well clear of other boats, exonerate the infraction by taking a penalty turn before reaching the next mark of the course.
- a. The penalty turn, for this and for any violations of Part 2 rules, shall consist of a 360 degree turn in the same direction that includes one tack and one gybe. This changes RRS 44.1.**
- 8.3 Restricted Areas – Yachts shall not pass between these buoys and the closest point ashore.
- the Bell buoy off the west end of Alcatraz
 - The Pt Blunt buoy off Angel Island

9. TIME LIMIT

- 9.1 Time limit shall be 1700 hours Saturday Aug 28, 2010. Any boat not finishing by 1700 hours will be scored DNF. This changes RRS 35.
- 9.2 Boats not completing the course must report to the Race Committee as soon as possible. The Race Committee Signal Boat will monitor VHF Channel 65.

10. PROTESTS

- 10.1 This changes RRS 61.1 All yachts shall inform the protested yacht by hailing immediately and then by the display of a red flag as soon as possible after the incident.
- 10.2 This changes RRS 61.3. A protesting yacht is required to notify the Race Committee of her intention to protest at the time she finishes. The Race Committee can be contacted on channel 65.
- 10.3 Protests shall be written on forms available at The San Francisco Yacht Club and lodged there no later than 1730 hours on Saturday Aug 28, 2010.
- 10.4 Protests will be heard, in the approximate order of submission, at The San Francisco Yacht Club at 1730 on Saturday, August 28.

11. FINISH PLACES

11.1 Starting times are calculated based on handicaps and starting times are staggered so that winners and finishing places can be determined by the order of finish.

11.2 Yachts racing in all classes will be scored against competitors in the respective classes.

11.3 Classes are defined by mainsail type: Marconi and Gaff.

12 RADIO COMMUNICATION

The Race Committee may broadcast information about the day's racing and OCS on Channel 65. Neither failure of the Race Committee to communicate the sail numbers of recalled boats in a timely manner nor failure of a recalled boat to receive or hear transmitted information will be grounds for redress. This changes RRS 62.

13 PRIZES

Prizes will be awarded for the First, Second, and Third-place finishers for Marconi and Gaff classes. The Trophy presentation will be on the San Francisco Yacht Club deck following race completion.

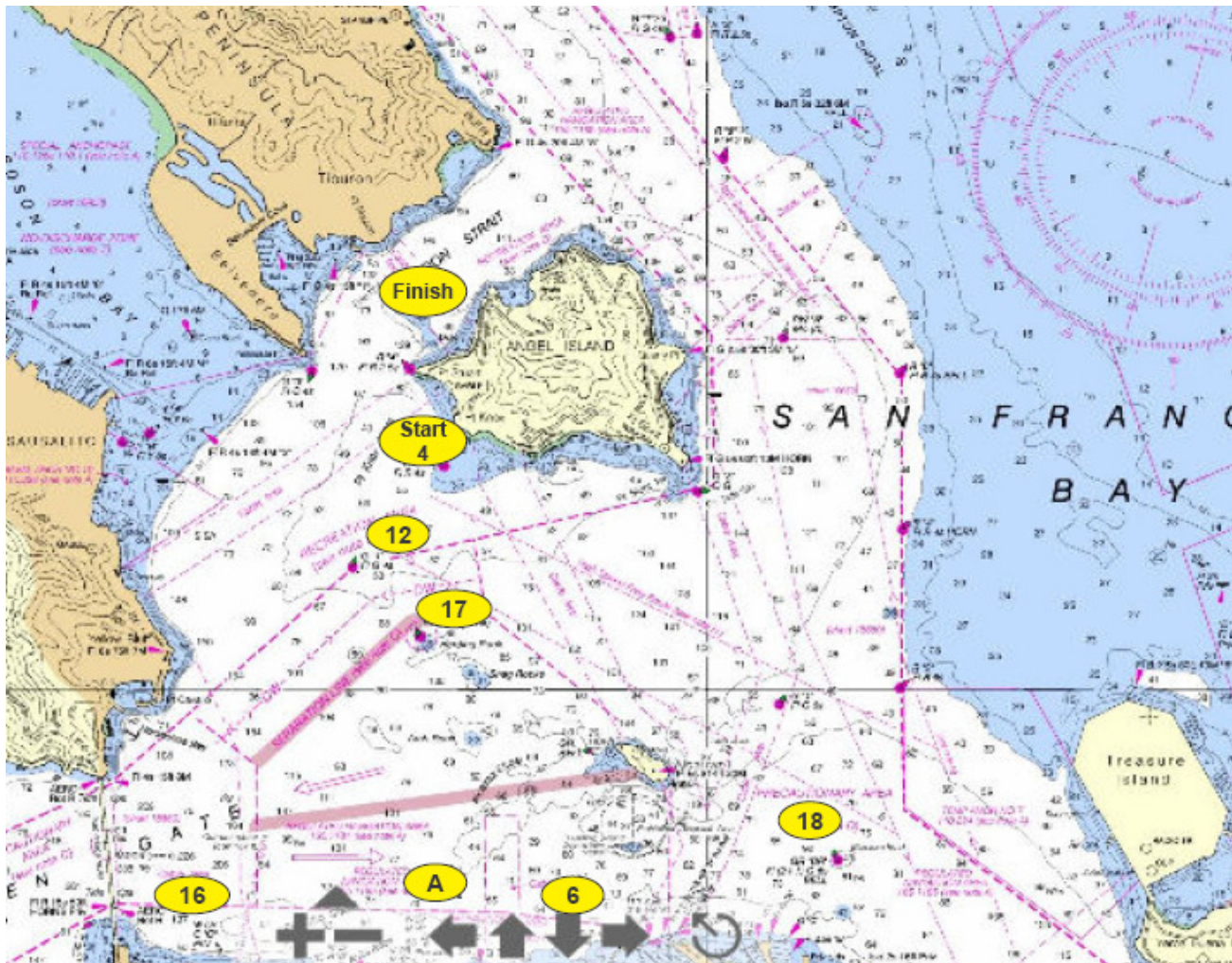
14 GUEST BERTHING

Guest Docks will be available for boats after the race by reservation.

Angie Lackey Olson & Jeff Zarwell, PRO

SFYC Race Office: Phone (415) 789-5647, Fax (415) 789-5648, race@sfyc.org

ATTACHMENT 1 - COURSE CHART (approximate mark locations, not to be used for navigational purposes)



**2010 GREAT SAN FRANCISCO SCHOONER RACE
ATTACHMENT 2 – START TIMES**

Start Time	Vessel	Division
12:00	Alma	Gaff
12:00	Stardust	Gaff
12:05		
12:10	Aida	Gaff
12:15		
12:20	Gold Star	Marconi
12:20	Aldebaran	Marconi
12:25	Regulus	Gaff
12:30	Gaslight	Gaff
12:35	Scorpio	Marconi
12:40	Elizabeth Muir	Gaff
12:45		
12:50	Brigadoon	Gaff
12:55	Santana	Marconi
12:55	Freda B	Gaff
13:00	Kaiulani	Gaff
13:00	Madhee	Marconi
13:05	Seaward	Marconi
13:10		
13:15	Jakatan	Gaff
13:20		
13:25		
13:30	Eros	Marconi