



MELGES²⁴

INTERNATIONAL MELGES 24 CLASS 2012 NORTH AMERICAN CHAMPIONSHIP

22nd to 26th August 2012

**Organizing Authority: The San Francisco Yacht Club in cooperation
with the U.S. Melges 24 Class and the International Melges 24 Class
Association (IMCA)**

Belvedere, CA USA

SAILING INSTRUCTIONS

1. RULES.

- 1.1 The regatta will be governed by the rules as defined in *The Racing Rules of Sailing* (RRS).
- 1.2.1 Only the US SAILING prescriptions to RRS 40, 68, 76.1, and added rules 61.4, 76.3, and 82 will apply and are stated in full in Addendum E.
- 1.3 The Equipment Rules of Sailing will apply.
- 1.4 The following rules will be changed:
 - 1.4.1 All competitors shall wear personal flotation devices while racing, except for brief periods while changing or adjusting clothing. Wet suits and dry suits are not personal flotation devices. This changes rule 40.
 - 1.4.2 Part 5, section B of the RRS as well as rule 44.1 and 63.1 will be changed to permit protest arbitration.

1.4.3 The RC will use VHF radio to communicate to the fleet. Failure to make this broadcast or failure to hear the broadcast shall not constitute grounds for granting redress. This changes rule 62.1.

1.4.4 Appendix P shall apply, and will be changed as described in NOR 11.2.

- 1.5 If there is a conflict between languages the English text will take precedence.
- 1.6 Class Rule H3 is changed to read Crews shall be weighed during the registration period prior to racing. During the event, Crews will be selected at random to be reweighed. Such reweighing shall be done on the same scale and at the same place and within 1 hour after the end of the protest time limit. Should a boat be found to exceed the maximum weight, she will be penalized by adding one point for each race of the day to her final total score - after discards - of the regatta for every kilogram over the limit. A boat found over the weight limit shall not continue racing until she complies with the class rule. Re-weighing under this situation shall be at the discretion of the Race Committee.

2 NOTICES TO COMPETITORS

- 2.1 Notices to competitors will be posted on the official notice board located outside the SFYC Youth Sailing Center.
- 2.2 Any questions concerning these sailing instructions, scoring, or any other racing issues shall be submitted in writing to the race office. Forms to submit inquiries are available there. All written inquiries and responses will be posted on the official notice board.

3 CHANGES TO SAILING INSTRUCTIONS

- 3.1 Any change to the sailing instructions will be posted before 0900 on the day it will take effect, except that any change to the schedule of races will be posted by 1900 on the day before it will take effect.

4 SIGNALS MADE ASHORE

- 4.1 Signals made ashore will be displayed from the main flagpole located adjacent to the SFYC clubhouse.
- 4.2 When flag AP is displayed ashore, '1 minute' is replaced with 'not less than 60 minutes' in the race signal AP.
- 4.3 Flag B hoisted with one sound signal means "One hour before the protest time limit". When lowered with one sound signal "Protest time limit has ended". This changes RRS race signals

5. SCHEDULE OF RACES

5.1 Schedule of events

Day	Date	Event	Time
Wednesday	22 August	Registration and Crew Weigh-in	0900-1700
Thursday	23 August	Registration and weighing Skipper's briefing Practice Race Competitors' Meeting Opening Ceremonies All Boats Afloat Principal event dinner	0900-1800 0915 Warning at 1200 1800 1800 1800 1800
Friday	24 August	Crew weigh-in Skipper's Briefing Racing Daily Awards/Social event	0845-0915 0915 Warning at 1200 1800
Saturday	25 August	Skipper's Briefing Racing Daily Awards/Social Event Principal event dinner & band	0915 Warning at 1200 1800 1800
Sunday	26 August	Skipper's Briefing Racing No warning signal after 1500 Haul Out after Racing Closing Ceremonies and Awards	0915 Warning at 1200 1500 1800

5.2 Eight (8) races are scheduled for the 2012 North American Championship.

5.3 All boats will sail as one fleet.

5.4 The RC may race as many as three (3) races each day.

5.5 After a long postponement, to alert boats that a race or sequence of races will begin soon, an orange flag will be displayed with one sound for at least four minutes before a warning signal is displayed.

5.6 The OA and/or the RC reserve the right to modify the programme due to weather conditions or other causes.

6 CLASS FLAGS

6.1 The Class flag used in accordance with RRS 26 will be the class insignia in black on a white background or numeral pennant # 1.

7 RACING AREAS

7.1 The racing area will be in the vicinity of the Berkeley Circle. Addendum A contains a chart showing the approximate racing area.

8 THE COURSES

8.1 No later than the warning signal, the race committee signal boat will broadcast and display the course, bearing and distance to mark 1. Failure to broadcast or to receive this notification shall not constitute grounds for granting redress. This changes RRS 62.1(a).

- 8.2 No later than the warning signal, the race committee signal boat will display the course, approximate compass bearing and distance of the first leg. The information will be arranged vertically.

Example:

5		<i>Course</i>
300		<i>Approximate magnetic bearing to Mark 1</i>
1.5		<i>Approximate distance to Mark 1. (nautical miles)</i>

Courses:

Course 3	Start - 1 - 1a - Gate – Finish (Upwind)
Course 4	Start - 1 - 1a - Gate - 1 - 1a – Finish (Downwind)
Course 5	Start - 1 - 1a - Gate - 1 - 1a - Gate – Finish (Upwind)
Course 6	Start - 1 - 1a - Gate - 1 - 1a - Gate- 1 - 1a – Finish (Downwind)
Course 7	Start – 1 – 1a – Gate – 1 – 1a – Gate- 1 – 1a – Gate – Finish (Upwind)

- 8.3 Marks 1 and 1a shall be rounded to port. Mark 1a is an offset mark and will be positioned to port of Mark 1.
- 8.4 (a) If only one Gate mark is set, boats shall round the single mark to port.
 (b) Except when there is a change of course, the Gate will be positioned to windward of the RC Signal Boat.
 (c) The Gate may be laid after the starting signal.
- 8.5 Except for when there is a change of course:
 (a) the finish for course 4 and 6 will be to leeward of the Gate.
 (b) the finish for course 3, 5 and 7 will be to windward of Mark 1.

9 MARKS

- 9.1 The original Mark 1 and the Gate marks will be large red inflatable marks. Mark 1a will be a small red inflatable mark.
- 9.2 New marks, as provided in SI 12.1, will be yellow inflatable marks.
- 9.3 The starting and finishing marks will be race committee boats displaying an orange flag, or a nearby inflatable mark.
- 9.4 A race committee boat signaling a change of the next leg of the course is a mark as provided in SI 12.2.

10 AREAS THAT ARE OBSTRUCTIONS

None

11 THE START

- 11.1 The starting line will be between the staffs displaying an orange flag on the starboard end signal boat and the port-end starting mark boat. In the event that the port-end mark boat is not on station, it will be replaced by an inflatable mark, and the starting line will be between the staff on the signal boat and the course side of that inflatable mark.
- 11.2 A boat starting later than 8 minutes after her starting signal will be scored Did Not Start without a hearing. This changes rules 63.1, A4 and A5.
- 11.3 Individual recalls and boats disqualified under RRS 30.3 may be broadcast on the VHF channel identified in SI 27 using bow and/or sail numbers. This is in addition to and changes RRS 29.1 and 30.3.
- 11.4 The RC will attempt to broadcast twice the bow and/or sail numbers of all boats observed to be OCS at the start; it will not alter the list based on a boat's actions subsequent to the start.
- 11.5 The Individual Recall flag shall be displayed until all such boats are completely on the pre-start side of the starting line or its extensions and have complied with rule 30.1 if it applies, but no later than eight (8) minutes after the starting signal. This changes RRS 29.1
- 11.6 Individual and General Recall flags may be displayed by the RC pin end starting line boat if used.

12 CHANGE OF THE NEXT LEG OF THE COURSE

- 12.1 To change the next leg of the course, the RC will lay a new mark (or move the finishing line) and remove the original mark as soon as practicable. When in a subsequent change a new mark is replaced, it will be replaced by an original mark.
- 12.2 Except at a gate, boats shall pass between the RC boat signaling the change of the next leg and the nearby mark, leaving the mark to port and the RC boat to starboard. This changes RRS 28.1.

13 THE FINISH

- 13.1 For downwind finishes, the finishing line will be between a staff displaying an orange flag on the finishing line boat and a staff displaying an orange flag on a nearby RC boat or the course side of a nearby inflatable mark.
- 13.2 For windward finishes, the finishing line will be between a staff displaying an orange flag on the finishing line boat and a staff displaying an orange flag on a nearby RC boat or the course side of a nearby inflatable mark.
- 13.3 If the race committee intends to start another race on the same day, it will display the Second Substitute (with no sound) while boats are finishing.

14 PENALTY SYSTEM

- 14.1 Rule 44.1 is changed so that the Two-Turns Penalty is replaced by the One-Turn Penalty, except that if the penalty is given afloat by the Jury it shall be a Two-Turns Penalty. This changes rule 44.1.
- 14.2 Appendix P (Special Procedures for Rule 42) shall apply. Rule P2.3 will not apply and rule P2.2 is changed so that it will apply to any penalty after the first one. This changes rule appendix P.

- 14.3 A boat that has taken a penalty under rule 31 or 44.1 shall complete an acknowledgment form at the Jury Desk within the protest time limit.

15 TIME LIMITS AND TARGET TIMES

- 15.1 The target time for each race is 50-70 minutes. Failure to meet the target time will not be grounds for granting redress. This changes rule 62.1(a).
- 15.2 Boats failing to finish within 20 minutes after the first boat sails the course and finishes will be scored Time Limit Expired (TLE) without a hearing. This changes rules 35, A4 and A5.

16 PROTESTS AND REQUESTS FOR REDRESS

- 16.1 Protest forms are available at the Jury Desk, on the deck of the Cove House. Protests shall be delivered there within the protest time limit.
- 16.2 The protest time limit is 60 minutes after the hoisting of Code Flag B per SI 4.3. This will be hoisted as soon as practical as the boats return to harbor. The same time limit applies to protests by the RC and Jury about incidents they observe in the racing area and to requests for redress. This changes RRS 61.3 and 62.2.
- 16.3 Notices will be posted within 30 minutes after the protest time limit to inform competitors of hearings in which they are parties or named as witnesses. Hearings will be held in the Jury Room in the Cove House adjacent to the main clubhouse.
- 16.4 Notices of protests by the RC or Jury will be posted on the official notice board to inform boats under rule 61.1(b).
- 16.5 A list of boats that have acknowledged breaking rule 42 or have been disqualified by the Jury will be posted with the hearing schedule.
- 16.6 It is each boat's sole responsibility to check the Jury notice board at the end of the protest filing time to see if she is cited in a protest. Failure of any competitor to appear when called for a hearing will be considered by the Jury as grounds for proceeding under RRS 63.3(b).
- 16.7 Breaches of instructions 14.3, 18, 21, 24, 25, 26, 27, 30 and 31 will not be grounds for a protest by a boat. This changes RRS 60.1(a). Penalties for these breaches and class rule breaches may be less than disqualification if the Jury so decides.
- 16.8 On the last day of the regatta a request for reopening a hearing shall be delivered
- (a) within the protest time limit if the party requesting reopening was informed of the decision on the previous day;
 - (b) no later than 20 minutes after the party requesting reopening was informed of the decision on that day. This changes rule 66.
- 16.9 Decisions of the Jury will be final as provided in RRS 70.5.
- 16.10 An arbitration system will be in operation for protests of rules in RRS Part 2. The details of arbitration are to be found in SI Addendum B.
- 16.11 If a member of the Jury witnesses an infringement of the RRS Part 2 and/or Class rule C.11, they may indicate their observation with a whistle and a red flag. The boat may then exonerate herself by complying with SI 14.1 (Two-Turns Penalty). If no penalty is taken the Jury may protest.

- 16.12 If the Jury witnesses an incident that cannot be called with the red flag as above, it shall indicate with a whistle and Code Flag “U” and expect a competitor protest ashore if no boat exonerates herself.
- 16.13 Action or lack of action by the Jury under SI 16.11 or 16.12 shall not be grounds for granting redress. The Jury boats may be positioned anywhere on the course area. Their position at any time shall not be grounds for granting redress. This changes RRS 62.1

17 SCORING

- 17.1 The Low Point scoring system of RRS Appendix A as changed below shall apply.
- 17.2 Three (3) races are required to be completed to constitute the championship.
- 17.3 When fewer than six (6) races have been completed, a boat's series score will be the total of her race scores. This changes rules 90.3 and A2.
- 17.4 When six (6) or more races have been completed, a boat's series score will be the total of her race scores excluding her worst score.
- 17.5 The scoring abbreviation for a discretionary penalty imposed under SI 16.7 will be “DPI”. This changes RRS A11.
- 17.6 Boats scored “TLE” will be scored points equal to the number of boats finishing within the time limit plus two points by the race committee without a hearing. This changes RRS A4.2, A5, and A11.
- 17.7 To request correction of an alleged error in posted race or series results, a boat shall complete a ‘Scoring Inquiry Form’ available at the jury desk and submit the completed form to the RC PRO.

18 SAFETY REGULATIONS

- 18.1 A boat that retires from a race shall notify the RC as soon as possible.
- 18.2 A boat that leaves the racing area between races shall notify the RC as soon as possible.
- 18.3 Boats not leaving the harbour for any of the day’s racing shall so inform the RC.

19 REPLACEMENT OF CREW OR EQUIPMENT

- 19.1 Substitution of competitors will not be allowed without prior written approval of the Race Committee PRO. Competitors desiring to substitute crew must have crew members weighed-in prior to 0800 on race day at the Race Office.
- 19.2 Substitution of damaged or lost equipment will not be allowed unless approved by the Race Committee PRO. Requests for substitution shall be made to the Race Committee at the first reasonable opportunity.

20 EQUIPMENT AND MEASUREMENT CHECKS

- 20.1 A boat or equipment may be inspected at any time for compliance with the class rules and sailing instructions.
- 20.2 In accordance with rule G3, a boat chartered or loaned for this event may carry national letters or a sail number in contravention of the Class Rules.
- 20.3 The race committee will post on the official notice board a list of boats that shall be checked for crew weight each day before the first boat arrives at the Club. The RC will

broadcast the bow numbers of boats selected as soon as the last boat crosses the finish line on the last race of the day.

21 ADVERTISING

- 21.1 Boats shall display advertising supplied by the organizing authority as follows; event bow stickers shall be attached to both sides of the boat's hull at all times while racing. Other advertising may be required in accordance with ISAF Regulation 20.

22 OFFICIAL BOATS

Official boats will be marked as follows:

Signal Boat	Blue Race Committee flag
Port-end line boat	Blue Race Committee flag
Windward mark/stake boat	Blue Race Committee flag
Jury boats	Code Flag 'J'
Press Boats	White Flag with Black 'PRESS'

23 SUPPORT BOATS

- 23.1 Team leaders, coaches and other support personnel shall comply with Addendum C.
23.2 During registration coach and support boats shall provide proof of insurance and photo ID of the driver. Boats shall comply with local laws and regulations regarding their operation.

24 TRASH DISPOSAL

- 24.1 Boats shall not put trash in water.

25 HAUL-OUT RESTRICTIONS

- 25.1 Boats shall not be hauled out during the regatta except with and according to the terms of prior written permission of the race committee.

26 DIVING EQUIPMENT AND PLASTIC POOLS

- 26.1 Underwater breathing apparatus (including snorkels) and plastic pools or their equivalent shall not be used around boats between the preparatory signal of the first race of the Championship Series and the end of the regatta.

27 RADIO COMMUNICATION

- 27.1 Except in an emergency, a boat shall neither make radio transmissions while racing nor receive radio communications not available to all boats. This restriction also applies to mobile telephones.
- 27.2 The RC will use VHF channel 65 to communicate to the fleet, including the location of the starting area, countdown to the start, OCS bow and/or sail numbers, General Recalls and Postponements. Failure to make these broadcasts or failure to hear them shall not constitute grounds for granting redress. This changes RRS 62.1.
- 27.3 RC may not acknowledge any radio transmission except in the case of an emergency, and shall not enter into dialogue with competitors.
- 27.4 Competitors shall not use any electronic device (including scanners) which can receive UHF frequencies from 0830 until their last finish for the day.

28 PRIZES

28.1 The prizes will be given as follows:

Single Fleet	Open Division	Corinthian Division
Daily Prizes	Winner of each individual race	Winner of each individual race
Overall Prizes	Prizes for winning helmsman and each crew member for the top five (5) boats	Prizes for winning helmsman and each crew member for the top three (3) boats

28.2 Additional Prizes may be given at the discretion of the OA.

28.3 The overall championship will be the winner of the open division and awarded the Melges 24 North American Championship Trophy.

28.4 The winner of the Corinthian Division will be awarded the Melges 24 North American Corinthian Trophy.

29 DISCLAIMER OF LIABILITY

29.1 Competitors participate in the regatta entirely at their own risk. See rule 4, Decision to Race. The organizing authority will not accept any liability for material damage or personal injury or death sustained in conjunction with or prior to, during, or after the regatta.

30 INSURANCE

30.1 Each participating boat shall be insured with valid third-party liability insurance of \$300,000 USD.

31 BOW NUMBERS, ID STICKERS AND FLEET BACKSTAY PENNANTS

31.1 Boats shall display bow numbers during the event. These, and instructions as to position will be supplied by the organizing authority. It is the responsibility of the crew to ensure the numbers remain on the boat and obtain replacements as necessary.

31.2 Boats sailing in the Corinthian Division will be required to display identification stickers on the mainsail as instructed during registration and as provided by the OA/RC at all times while racing.



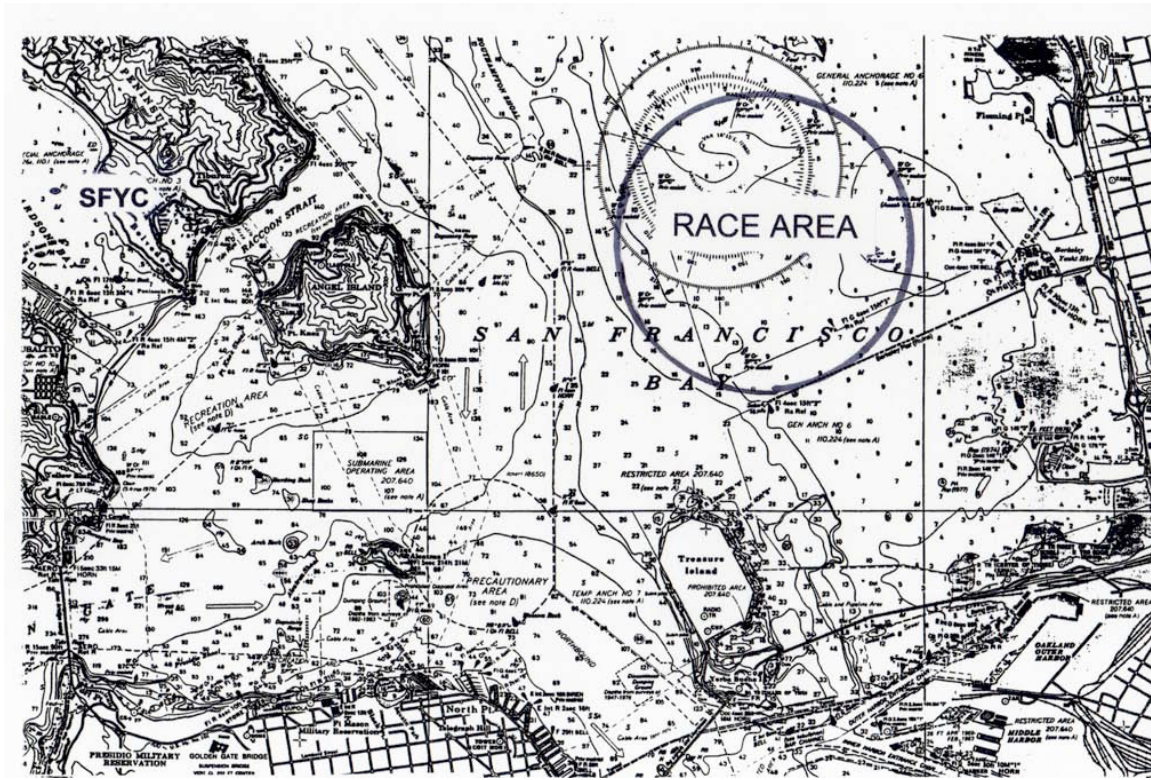
Race Officers:

Principal Race Officer: Hank Stuart, International Race Officer

Cell # 585-414-6105 Email: hstuart8m@gmail.com

Deputy PRO: Bartz Schneider, National Race Officer

ADDENDUM A
RACING AREA



ADDENDUM B
ARBITRATION

1. After a protest has been lodged in accordance with the SIs alleging a breach of a rule of RRS Part 2, both parties involved shall be heard by an Arbitrator appointed by the Jury.
 - 1.1 In exception to the above, incidents where damage or injury are involved shall not be subject to arbitration, but shall be referred directly to the Jury for a hearing.
2. Only one representative from each boat involved, who shall have been on the boat at the time the incident occurred, shall attend the arbitration hearing. No witnesses shall be allowed.
3. The validity of the protest per rule 63.5 will be determined. If the appropriate requirements of rule 61 have been met arbitration will continue. If the appropriate sections of rule 61 have not been met, the arbitrator may rule the protest invalid. The protestor may accept the ruling or have the protest referred to the Jury.
4. The arbitrator will have each party describe the incident, limiting each party to approximately five (5) minutes. After hearing these descriptions, the arbitrator will offer one of the following opinions:
 - 4.1 No rule was broken. If the protesting boat accepts this opinion she can agree to withdraw the protest and the protest is then settled.
 - 4.2 A rule was broken by one of the boats involved. If that boat accepts this opinion she may accept a 40% scoring penalty and the protest is then settled.
 - 4.3 Both boats broke a rule. If both boats accept this opinion and each agrees to accept a 40% scoring penalty the protest is then settled.
 - 4.4 The arbitrator is unable to offer an opinion based on the brief description given by the parties.
5. Once the protest has been settled under 4.1, 4.2 or 4.3 above, the arbitrator shall record this on the protest form and the matter shall not thereafter be referred to the Jury and is not subject to requests for redress, reopening or appeal by any party.
 - 5.1 If however:
 - 5.1.1 The protestor does not withdraw the protest under 4.1 above; or
 - 5.1.2 If a competitor does not accept the arbitrator's opinion that she broke a rule under 4.2 or 4.3; or
 - 5.1.3 If the arbitrator is unable to offer an opinion under 4.4, the protest shall be submitted to the Jury for a hearing.
6. If the arbitrator's opinion is not accepted, there shall be no further discussion of the incident with the parties and the testimony given at the arbitration hearing shall remain confidential and shall not be discussed with any person prior to the hearing.
7. If a party fails to attend, the arbitration may still be heard, as in rule 63.3(b).
8. When protests are submitted to the Jury, the arbitrator shall not be a member of the panel hearing the protest; however, he/she may be called as a witness. Unless called as a witness, the arbitrator shall not discuss the matter with Jury members until after the decision has been posted.
9. Application of the 40% penalty shall be calculated in accordance with rule 44.3, except that the penalty is modified to read 40%. This changes rule 44.3.

ADDENDUM C

COACH, SUPPORT, PRESS & SPECTATOR BOATS

COACH AND SUPPORT BOATS

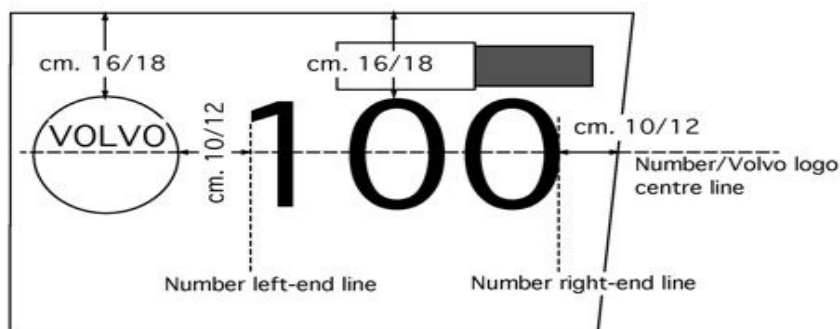
1. Coach and support boats shall register with the race office during registration. They shall declare which boat or boats they are attached to.
2. Coach and support boats shall display a flag, or other identification symbol, as may be required by the RC.
3. No coach boat or support boat shall pass information in any way to a boat that is racing per Rule 41. Infringements of this will be taken very seriously.
4. Coach and support boats shall communicate only with the boats they are registered to, and only by means of voice between races. Closed VHF or mobile telephone communication is prohibited.
5. All Melges 24 boats shall proceed to the racing area under their own power.
6. There shall be no transfer of any goods or equipment until after the finish of the last race of the day between Melges 24's and their coach or support boats.
7. Coach and support boats shall not go alongside their Melges 24's until after the finish of the last race of the day.
8. Coach and support boats shall keep clear of the racing area at all times during racing.
9. If any coach or support interferes with another competitor or the racing in any way, including creating excess wash, or hinders an official boat carrying out its duties, the competitor(s) to which that coach or support boat is attached shall be liable to a penalty at the discretion of the Jury.
10. Any competitor may protest under this attachment.
11. The penalty given by the Jury is at their discretion, but shall be applied to the overall score and therefore not discarded.

PRESS AND SPECTATOR BOATS

1. All Press and official spectator boats shall be registered by the OA during registration.
2. Press and spectator boats shall display any flag, or other identification symbol as may be required by the OA or RC.
3. The OA may appoint one or more photo boats, which will be allowed within the race course. The position of these boats shall not be grounds for redress.
4. Press and spectator boats shall not interfere with the racing in anyway and shall stay at a distance outside the racecourse where their wake causes no problem.

ADDENDUM D STICKERS AND BOW NUMBERS DIAGRAM

STICKERS AND BOW-NUMBERS DIAGRAM



BOW NUMBER AND EVENT SPONSOR STICKER/PENNANT INSTRUCTIONS TO APPLY VINYL BOW NUMBERS AND SPONSORS STICKERS ON HULL:

1 – Make Sure hull is clean!!! (Clean and let dry)

The numbers and stickers are made to be removable, so you need to wipe the hull with a solvent to remove any waxes. If a Teflon wax has been used on the boat repeat this step until tape sticks easily to hull.

2 – The bow numbers shall be displayed on both sides of the bow in accordance with the diagram. The sponsor's sticker shall be aft of the bow numbers.

3 – Remove wax paper backing from numbers and stickers by peeling away the top or corner of the backing paper.

4- Position, with masking tape if necessary, in the appropriate place, and remove the rest of the backing paper. A light spray of water will assist in sliding larger stickers into the correct position.

5 – Squeegee stickers to remove all air bubbles and water. Work from the center outwards towards edges, rub thoroughly.

** A Squeegee can be a credit card, plastic scraper, or any similar smooth piece of plastic.

6 – Peel any masking tape or outer sheet off boat pulling slowly making sure that you are pulling the tape back against itself, and not out away from the boat.

7 – Rub with soft towel.

8 - Please note the Sailing Instructions make it your responsibility to ensure your bow numbers remain in place and are visible.

ADDENDUM E US SAILING PRESCRIPTIONS

E1.1 Rule 40–US SAILING prescribes that every boat shall carry life saving equipment conforming to government regulations that apply in the racing area.

See http://raceadmin.ussailing.org/Rules/Personal_Flotation_Device.htm

E1.2 Add Rule 61.4–US SAILING prescribes that no fee shall be charged for protest or request for redress.

E1.3 Rule 68–US SAILING prescribes that:

(a) A boat that retires from a race or accepts a penalty does not, by that action alone, admit liability for damages.

(b) A protest committee shall find facts and make decisions only in compliance with the rules. No protest committee or US SAILING appeal authority shall adjudicate any claim for damages. Such a claim is subject to the jurisdiction of the courts.

(c) A basic purpose of the rules is to prevent contact between boats. By participating in an event governed by the rules, a boat agrees that responsibility for damages arising from any breach of the rules shall be based on fault as determined by application of the rules, and that she shall not be governed by the legal doctrine of ‘assumption of risk’ for monetary damages resulting from contact with other boats.

E1.4 Rule 76.1–US SAILING prescribes that an OA or RC shall not reject or cancel the entry of a boat or exclude a competitor eligible under the notice of race and sailing instructions for an arbitrary or capricious reason or for reason of race, color, religion, national origin, gender, sexual orientation, or age.

E1.5 Add Rule 76.3–US SAILING prescribes that a boat whose entry is rejected or cancelled or a competitor who is excluded from a race or series shall be, upon written request, entitled to a hearing conducted by the Protest Committee under Rules 63.2, 63.3, 63.4 and 63.6.

E1.6 Add Rule 82 - INDEMNIFICATION OR HOLD HARMLESS AGREEMENTS
US SAILING prescribes that the organizing authority shall not require a competitor to assume any liabilities of the organizing authority, race committee, protest committee, host club, sponsors, or any other organization or official involved with the event. (This is commonly referred to as an ‘indemnification’ or ‘hold harmless’ agreement.)

See www.ussailing.org/rules/indemnification for more information.

Thank You to Our Generous Sponsors

