



SPINNAKER CUP 2016

San Francisco To Monterey

Friday, May 27, 2016

SAILING INSTRUCTIONS

**Organizing Authorities: The San Francisco Yacht Club, Belvedere, CA
and Monterey Peninsula Yacht Club, Monterey, CA**

1 RULES

- 1.1 This race will be governed by the *rules* as defined in *The Racing Rules of Sailing* (RRS). From the hours of sunset to sunrise, the *International Regulations for Preventing Collisions at Sea* (COLREGS) shall replace Part 2 of the RRS. Use 2018 hours for sunset on May 27 and 0555 hours for sunrise on May 28.
- 1.2 Boats shall not impede the passage of commercial vessels and shall comply with the COLREGS. If a commercial vessel has sounded five blasts, and the vessel or the Coast Guard identifies the boat by sail number, the Race Committee shall protest the boat, in which case the Protest Committee shall assume that the identified boat has impeded passage or violated COLREGS, enforced by the Coast Guard, and the identified boat shall have the burden of proving otherwise. In the case of a complaint by the Coast Guard, the protest time limit shall be extended up to two days after the conclusion of the regatta. This changes rule 61.3. Compliance with rule 60.2(a) shall not be required. The San Francisco Yacht Club and Monterey Peninsula Yacht Club will cooperate with and provide information relevant to any investigations of impeding passage or violation of COLREGS, enforced by the Coast Guard, or other government authority.
- 1.3 The minimum offshore requirements for this race are as specified by the Northern California Ocean Racing Council. A list of these requirements can be found on the web at <http://norcalorc.org>, under "Equipment List".
- 1.4 The following changes to the minimum offshore requirements are in effect:
 - a. The four-hour Coastal Safety at Sea Seminar does not qualify for requirement 4.3.2.
 - b. The "Person in Charge" will be defined as the registered Skipper
- 1.5 Rule 40 is deleted and replaced with: "All competitors are required to wear lifejackets that comply with the equipment requirements (33.7 lbs or greater inflatable or USCG type 1) including crotch/leg straps while on deck." Code flag Y will not be displayed.
- 1.6 Rule 52 is changed for the Short Handed Sailing (SHS) class only, to allow the use of autopilots during the race. If used, ratings will be increased by 12 seconds per mile.

2 NOTICES TO COMPETITORS

Notices to competitors prior to the start will be posted on the official notice board located outside on the west wall of the SFYC Clubhouse. After the finish, notices will be posted on the bulletin board at the Monterey Peninsula Yacht Club. The NOR, SIs, and amendments thereof will be posted online at www.sfyc.org.

3 CHANGES TO SAILING INSTRUCTIONS

Changes to the sailing instructions will be posted (on the SFYC official notice board and on

www.sfyc.org and www.mpyc.org) by 1200 hours on Thursday, May 26. In the event of any changes, code flag "L" will be displayed ashore, on the main flagpole on the lawn at The San Francisco Yacht Club.

4 RACE SCHEDULE AND CLASS FLAGS

- 4.1 The first warning signal will occur at 1100 hours on Friday, May 27.
- 4.2 The classes are designated as follows:
- Class D: Any boat whose NCPHRF Rating is less than or equal to 0
 - Class E: D/WL Ratio less than 200 and NCPHRF less than 61
 - Class F: D/WL Ratio less than 200 and NCPHRF equal to or greater than 61
 - Class G: D/WL Ratio equal to or greater than 200
 - Class J: Short Handed Sailing (Any boat sailed Single-handed or Double-handed)
 - Class K: Multi Hull
 - Class M: Santa Cruz 50/52
- 4.3 The expected starting order and class flags are as follows, except if any classes are divided, the additional class flags and revised expected starting sequence will be identified in the amendment posted by 1200 hours on May 26, at SFYC and on www.sfyc.org and www.mpyc.org. Class flags will be international code flags.

Class	Class Flag
D	Code Flag D
E	Code Flag E
F	Code Flag F
G	Code Flag G
J	Code Flag J
K	Code Flag K
M	Code Flag M

5 RACING AREA AND COURSE

- 5.1 The start will be located in the San Francisco Bay Knox Race Area, in the vicinity west of Pt. Knox on Angel Island.
- 5.2 **Course 1** will be from the starting line to the finish line off Municipal Wharf 2 in Monterey.
- 5.3 **Course 2** will be from the starting line to the Golden Gate Main Ship Channel Buoy R8, Fl R2.5s whistle (approx. 6 NM at 242 degrees from the Golden Gate Bridge), leaving the buoy to port, then to the finish line off Municipal Wharf 2 in Monterey.
- 5.4 On both courses, for safety reasons, each of the lines bounded by the following two points is an obstruction:
- a.) The south tower of the Golden Gate Bridge, and the closest point ashore.
 - b.) Mile Rock, and the closest point ashore.
 - c.) Any rock visible at mean lower low water adjacent to the Marin County or San Francisco shorelines, and the closest point ashore from it.
- 5.5 The course to be sailed will be designated by numeral placards displayed from the race committee signal boat.

6 START CHECK-IN

- 6.1 All boats shall check in with the race committee on USA VHF 65A between the hours of 1000 and 1055 using the boat's primary fixed radio with masthead antenna. This communication is required to verify proper radio functionality and will include questions

about the number and names of crew on board. **If there has been any change from the online registration, boats will be asked to switch to VHF USA 78 to provide the new information.** Check in is not complete until a boat receives confirmation from the race committee. **Failure to complete this communication successfully shall result in a score of DNC.** This changes rules 63.1 and A5.

- 6.2 Random inspections may be made before the start for compliance with the minimum offshore requirements equipment list. If selected, the RC will come along side the boat and request items to be shown for inspection. Boats that do not pass the inspection will be protested by the race committee. Penalties will be determined by the protest committee, based on the level of offense, up to and including DSQ.

7 THE START

- 7.1 The warning signal for each succeeding class will be after the start for the preceding class.
- 7.2 The starting line will be between a staff displaying an orange flag on the SFYC Race Committee Signal Boat and a red inflatable buoy.
- 7.3 A boat on the course side of the starting line that does not comply with rule 29.1, or 30.1 if applicable, will receive a penalty of one hour added to her elapsed time. This changes rule A4.2.
- 7.4 After the start, all boats are requested to change to VHF 16. Once you are within 2 miles of the finish, please change back to USA VHF 65A. Roll calls may be conducted after dark at the discretion of the RC to check on safety and approximate locations of any boats that have not finished. RC will hail on both VHF 16 and VHF USA 65A.

8 FINISH CHECK-IN

- 8.1 Approximately 2 nm prior to their finish, all boats shall check-in with the Race Committee using either USA VHF 65A or cellular phone number 202-615-3841. Failure to report may result in a score of DNF. This changes rule A4.1. After crossing the finish line, all boats that have reserved a berth in Monterey Marina shall switch to VHF 5A for pilot guidance to their slip.
- 8.2 Random inspections will be made after the finish for compliance with the minimum offshore requirements equipment list. If selected, the RC will contact the boat at the finish line on USA VHF 65A and arrangements will be made for the inspection. Boats that do not pass the inspection will be protested by the race committee. The same boat may be selected at both the start and the finish.
- 8.3 All boats not finishing by 1200 hours on Saturday, May 28 must take their own finish times and report it to the race committee by posting the boat's name and finish time on the bulletin board located at the Monterey Peninsula Yacht Club, Municipal Wharf 2, Monterey, CA, **and** by calling 202-615-3841.

9 THE FINISH

The finish line will be between the end of Municipal Wharf 2 in Monterey and a fixed yellow drum with a white pipe and a continuous white light on it, located approximately 1000 feet to the east. The approximate location of the mark is: Latitude N 36:36.24, Longitude W 121:53.11. Skippers are advised to check their charts and on board navigation instruments to verify the exact location of the finish line. Illustration A is provided for reference, not for navigation. As conditions permit, a large inflated, illuminated figure may be placed near the race committee location to visually demarcate the on-shore end of the finish line.

10 PENALTY SYSTEM

The Scoring Penalty, rule 44.3, will apply. The penalty will be 10 minutes added to the boat's finish time. A yellow flag will not be required, but a boat taking a penalty shall

notify the race committee at the finish line. This changes rule 44.3.

11 TIME LIMIT

- 11.1 The time limit for the race will be 1200 hours on Sunday, May 29.
- 11.2 All boats retiring or not finishing by 1200 hours on Sunday, May 29, shall report the fact to the race committee at MPYC, by calling 202-615-3841. Failure to report may be grounds for rejecting your entry in future races.

12 PROTESTS AND REQUESTS FOR REDRESS

Protests shall be delivered to a member of the Spinnaker Cup Race Committee, at MPYC, Municipal Wharf 2, Monterey, CA, by 1200 hours on Saturday, May 28, or two hours after finishing, whichever is later. Notices will be posted on the Spinnaker Cup Bulletin Board at MPYC no later than one hour after receipt of the protest, to inform competitors of time and place of hearings in which they are parties. Protests will be heard as soon as reasonably possible.

13 SCORING

- 13.1 Northern California PHRF Ratings will be used to calculate the corrected times using Time-on-Time scoring.
- 13.2 Either standard or downwind PHRF Ratings will be used. The rating used will be based on the following data observed during the race:
Average wind direction calculated from hourly data reported from the following National Data Buoy Center buoys for the 14 hours after the first class' starting signal. Each buoy's average will then be averaged. Any individual observations that are missing will be disregarded.
 - a.) Station 46026 (San Francisco) located 18NM West of San Francisco
 - b.) Station 46012 (Half Moon Bay) located 24NM SSW of San Francisco
 - c.) Station 46042 (Monterey) located 27NM WNW of MontereyObserved data from these buoys is available at www.ndbc.noaa.gov
- 13.3 Standard PHRF Ratings will be used if the computed wind direction is greater than or equal to 65 (degrees true) and lower than or equal to 245 (degrees true).
- 13.4 Downwind PHRF Ratings will be used if the computed wind direction is lower than 65 (degrees true) and greater than 245 (degrees true).

14 RADIO COMMUNICATIONS

- 14.1 The race committee may broadcast information about the day's racing, and OCS boats, on USA VHF 65A. The failure of any boat to hear the hail, the hail of some but not all OCS boats, the untimely hail of some or all OCS boats or failure to hail any or all boats shall not be grounds for granting redress. This changes rule 62.1.
- 14.2 Except in an emergency, or as required while checking in, a boat shall neither make radio transmissions while racing nor receive radio communications not available to all boats. This restriction applies to mobile telephones.

15 PRIZES

Trophies will be awarded to the top finishers in each class, with the number of trophies depending on the number of entries per class. The trophy presentation will be held at MPYC as soon as practicable on Saturday, May 28. The time will be posted on the Spinnaker Cup Bulletin Board at MPYC.

16 BERTHING

- 16.1 The SFYC guest docks will be available before the race to participants, starting on Wednesday, May 25.

- 16.2 In Monterey, the City of Monterey Harbormaster will allocate slips in the Municipal Marina to all participants who have filed a request form in advance. Individual slip assignments will be given to each boat after finishing, using VHF Channel 5A or Cellular Phone. The number for the Night Harbormaster is 831-594-7760. During daytime hours (0800 to 1600), the number for the Harbormaster is 831-646-3950. Note that slip fees are not included with the entry fee; you must check-in with the Harbormaster after you finish and before you enter the harbor, even if you are just dropping off crew.
- 16.3 Boats hauling out at the hoist may be temporarily docked at the MPYC guest docks.
- 16.4 The haul-out crane is to be operated by Harbormaster certified operators only. Coordinate haul-out time with MPYC Race Committee for operator availability.

17 DISCLAIMER OF LIABILITY

Competitors participate in the regatta entirely at their own risk. See rule 4, Decision to Race. The organizing authority will not accept any liability for material damage or personal injury or death sustained in conjunction with or prior to, during, or after the regatta.

Co-Regatta Chairs & Principal Race Officers:

Nancy DeMauro, SFYC, (415) 630-0002, ndemauro@hotmail.com

Dino Pick, MPYC, (202) 615-3841, dinopick@gmail.com

SFYC Race Office: (415) 789-5647, race@sfyc.org

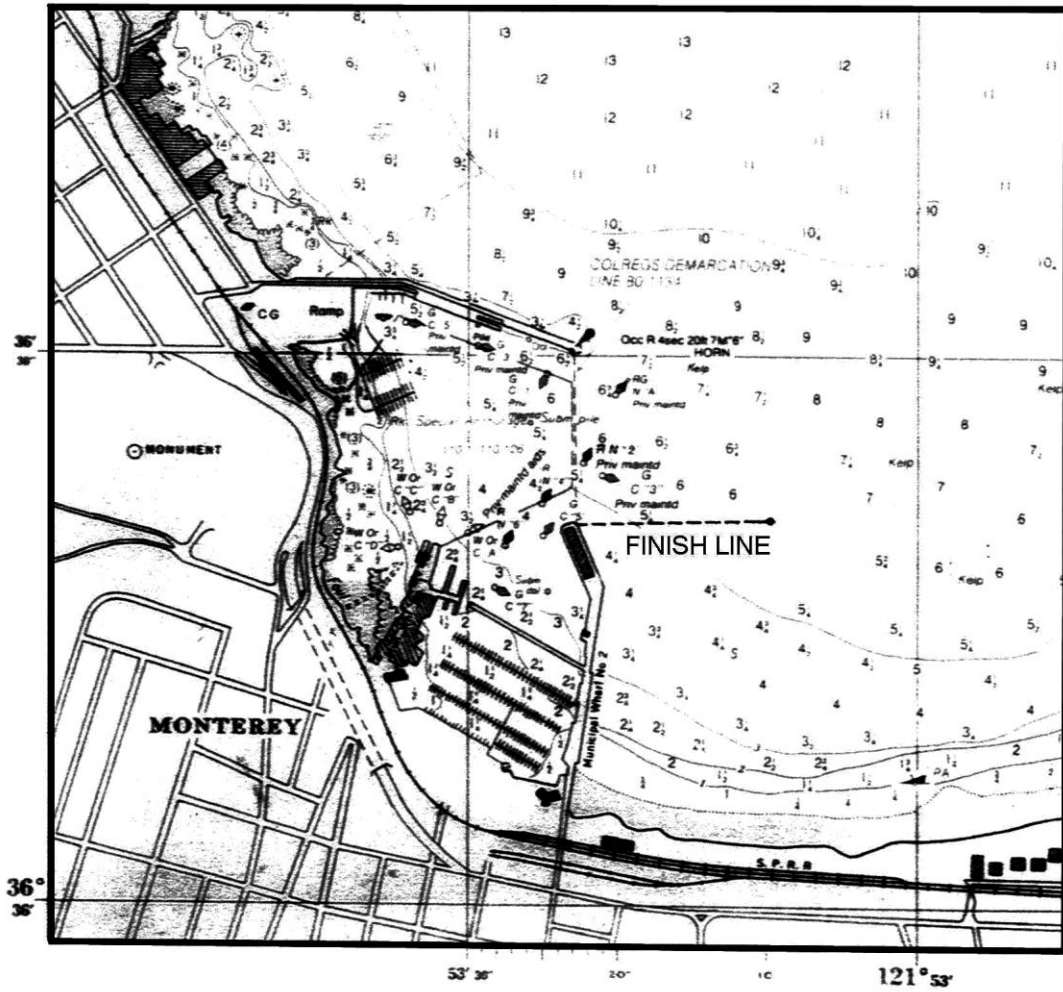


Illustration A: The Finish Line (chart for reference only, not for navigational purposes).